

Project

Queen Elizabeth St. Apartments



studio@timothy.co.uk
+44 (0)20 7403 2482
www.timothy.co.uk

Date
Current

Client
Clancroft Properties

Project Type
Residential / Commercial

Location
Southwark, London

Cost/ Value
£7.8m

Structural Engineers
Glanville Consultants

Status
Outline



01. cgi photomontage view 1 : approach from Tooley Street



02. photomontage view 2: from 'pocket park'



03. Montage view3: Tower Bdg.Rd (& TheShard)



04. Photomontage view 4: from Queen Elizabeth Street.

Project

Queen Elizabeth St. Apartments



studio@timothy.co.uk
+44 (0)20 7403 2482
www.timothy.co.uk

A design proposal to develop a small apartment block on a prominent site close to Tower Bridge, a World Heritage Monument.

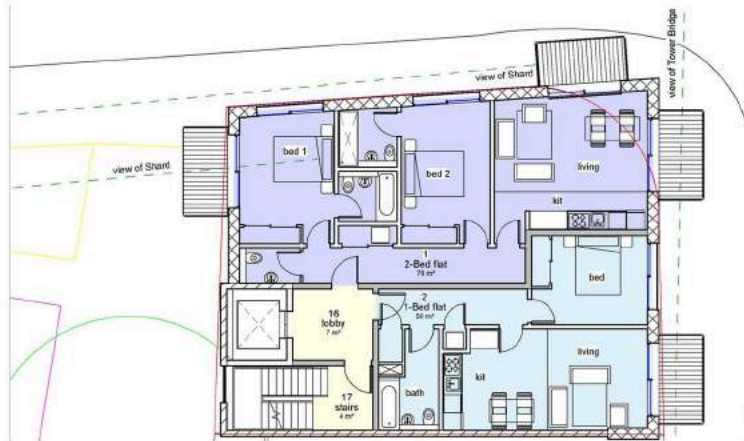
The design comprises 189m² (approx. 2,000ft²) commercial space on basement and ground floors, with apartments on the upper floors above.

The residential element comprises : 4 x 50m² (540ft²) 1-bed apartments, 4 x 76m² (820ft²) 2-bed apartments and 1 spectacular 2-storey 3-bed penthouse apartment over 195m² (2,100ft²) with extensive terraces affording fabulous views of Tower Bridge and The Shard.

The apartments will be faced with natural stone and will have large floor to ceiling windows and sliding doors to take maximum advantage of the views.

Access to the apartments is via Queen Elizabeth Street, and the apartments are designed to take advantage of the favourable views in this location with the use of generous balconies and terraces.

The retail unit will have high ceilings at ground level to tie in with the architectural features of the adjacent bank building.



05. Typical floor plan



06. Axonometric detail of penthouse



07. Photomontage showing bank building at junction of Tooley Street and Tower Bridge Rd