

Project

Lewisham Premier Inn Hotel



studio@timothy.co.uk

+44 (0)20 7403 2482

www.timothy.co.uk

Date
2011-2015

Project Type
Hotel

Location
Lewisham, London

Cost/ Value
£5.3m

Structural Engineers
Glanville Consultants

Cost Consultants
Gardiner & Theobald

Contractors
**Anglo Holt Construction /
Gilbert Ash**

Status
Completed



01. Photograph of the entrance to the hotel from under the railway bridge



02. View of the hotel from railway platform



03. The balconies from pavement level



04. Rear view from Granville Park

Project

Lewisham Premier Inn Hotel



studio@timothy.co.uk
+44 (0)20 7403 2482
www.timothy.co.uk

Timothy Associates designed Lewisham's first Whitbread PLC hotel. The hotel comprises 60 bedrooms with a ground floor restaurant and bar.

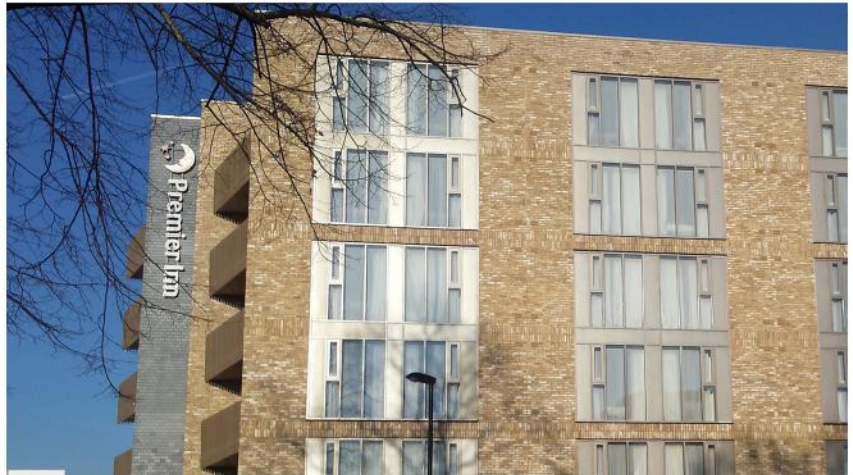
The directors of Timothy Associates created this project by personally taking out an Option on the site, and in this way were able to ensure the quality of the development.

The site is ideally located for a hotel, being close to 3 major transport interchanges: the main line railway station, the docklands light railway terminus and the bus station.

The hotel is also adjacent to a major new urban regeneration project known as Lewisham Gateway. Lewisham Gateway is a six-year plan to revamp the town centre, which significantly alters traffic systems in the area and includes several high density tall towers with commercial and residential uses. The regeneration will create shops, restaurants, leisure facilities, a riverside park and a new town square.

The hotel site is in a Conservation Area and the new building acknowledges the adjacent Victorian terraces. It has also created a link with the town centre, enhanced the urban environment, and contributed towards the lively contemporary urban mixed-use environment that was envisioned for the town centre.

The use of high quality materials and detailing exceeds the normal offer for Premier Inn and the landscaping of the external forecourts significantly improves the Public Realm with tree planting in natural granite paving, bespoke planters, and a new lightbox artwork piece under the railway bridge.



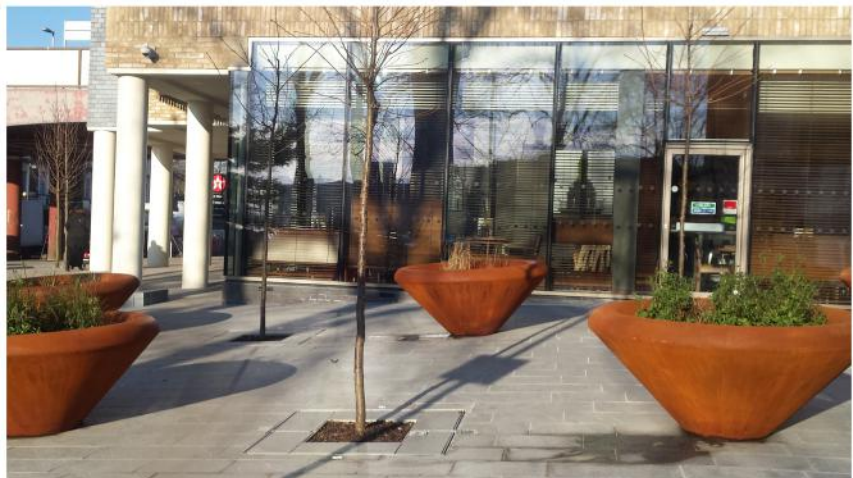
05. The south-facing elevation



06. Ground floor layout



07. Typical rooms layout



08. The ground floor restaurant