

Project

Enslaved Africans Memorial Garden



studio@timothy.co.uk
+44 (0)20 7403 2482
www.timothy.co.uk

Date
2011-present

Client
Memorial 2007

Project Type
Landscape

Location
Hyde Park, London

Cost/ Value
£2.4m

Structural Engineers
Glanville Consultants

Status
Planning Permission Granted



01. cgi view 1: Approach to sculpture from East



02. cgi view 2: Cannon balls along coast



03. cgi view 3: Sculpture from South



04. cgi view of memorial garden approaching from West

Project

Enslaved Africans Memorial Garden



studio@timothy.co.uk
+44 (0)20 7403 2482
www.timothy.co.uk

Timothy Associates has won a competition to design a memorial garden to mark the bicentenary of the Parliamentary Abolition of the Slave Trade in 2007, to remember enslaved Africans and their descendants. Currently there is no permanent national memorial in this country or in any major nation's capital city to commemorate and remember the millions of unnamed enslaved Africans whose lives were sacrificed during the era of Trans-Atlantic slavery.

The Enslaved Africans Memorial Garden will be located within the Rose Garden of London's Hyde Park. It will be themed on the 'Slave Trade Triangle' and will feature 'tropical' planting. A powerful new bronze statue designed by a leading artist Les Johnson FRBS will be placed at the focal point in the centre of the garden with the 'Freedom Figure' facing 'Africa'.

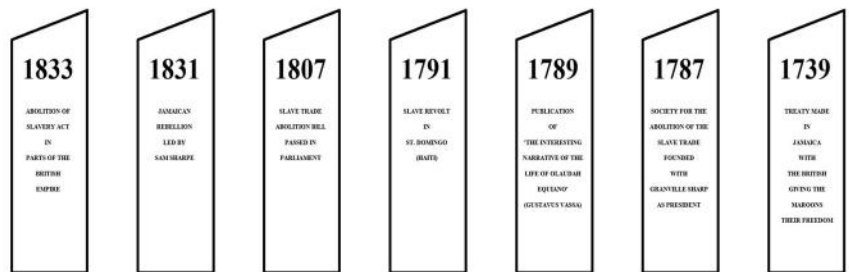
The garden will be based on the theme of the 'Slave Trade Triangle' with three main planted zones representing Europe, Africa and the Americas, linked with concentric rings of paving representing the Atlantic Ocean.

The European zone to the north of the garden will be planted with dog roses. The African zone to the east will contain brightly coloured flowers and bold foliage. The Americas zone to the west, in stark contrast, will have a monoculture of tall ornamental grass representing the sugar plantations where many Africans were enslaved.

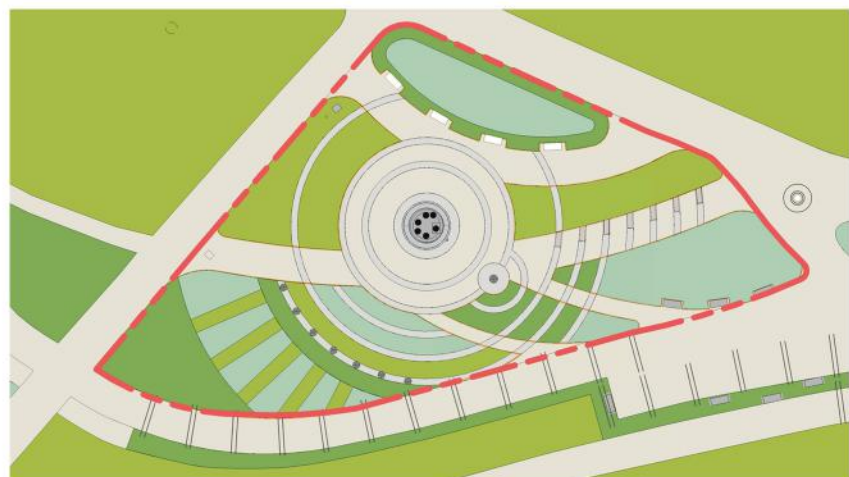
Key dates leading to the abolition of slavery will be carved into paving slabs, and further symbolism is provided by stone balls and chain representing the terrible trans-Atlantic crossings known as the 'Middle Passage'. The garden will be a place for quiet contemplation and education and will be accessible to all.



05. 3d view of Enslaved Africans Memorial Garden, looking South



06. 7 Steps to Abolition



07. Plan of Enslaved Africans Memorial Garden