

Project

Bayswater Road



studio@timothy.co.uk

+44 (0)20 7403 2482

www.timothy.co.uk

Date

1999

Client

Norwest Holst

Project Type

Residential / Commercial

Location

Bayswater, London

Cost/ Value

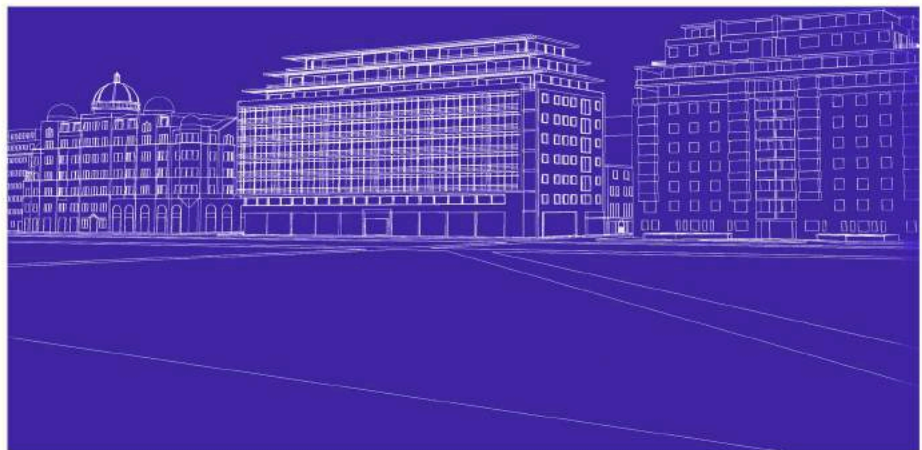
£20m

Status

Scheme Design



01. cgi photomontage showing view from Kensington Gardens



02. 3d view from East



03. 3d view from West

Project

Bayswater Road



studio@timothy.co.uk

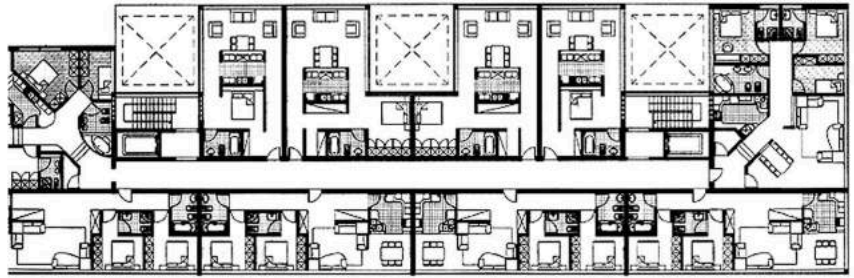
+44 (0)20 7403 2482

www.timothy.co.uk

A design proposal for a luxury apartment block containing 91 apartments overlooking Kensington Gardens on the site of the Royal Bayswater Hotel.

The proposal involved the acquisition of a group of existing buildings fronting the park and replacing them with a new development which created a new urban block complementing the scale of adjacent buildings,

The proposal for a development of 154,960 sq. ft also includes basement parking and ground floor retail units. The penthouses on the top floors have generous terraces affording spectacular views overlooking the park.



04. First floor layout



05. Axonometric view of typical penthouse floor



07. Cross section