

Project

Abidjan Townhouses



studio@timothy.co.uk

+44 (0)20 7403 2482

www.timothy.co.uk

Date

2015

Client

Private

Project Type

Residential

Location

Abidjan, Ivory Coast

Cost/ Value

Confidential

Status

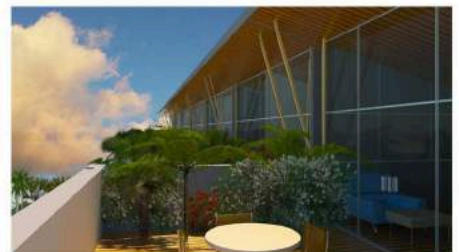
Scheme Design



01. cgi view 1: From Street



02. cgi view 2: Rear garden from day room



03. cgi view 3: Terracel



04. cgi Birdseye view showing back gardens

Project

Abidjan Townhouses



studio@timothy.co.uk

+44 (0)20 7403 2482

www.timothy.co.uk

A design concept for a terrace of 7 townhouses built with local stone.

Each house has a gross internal area of 191m² (approx. 2,000ft²) built over 4 storeys, providing 3 double beds (2 en-suite plus third communal bathroom), plus ground floor kitchen, dining / day room, first floor drawing room and third floor study/ home office leading onto a generous south facing roof terrace overlooking the gardens.

There are also 2 first floor balconies providing sunshine and shade.

The ground floor reception area leads out to a shaded terrace, and on to a private courtyard garden with a small swimming pool.

All of the houses are entered through a private secure courtyard with 2 parking spaces allocated to each house plus additional visitor parking.



05. Axonometric view of typical townhouse



06. Ground floor layout showing 7 townhouses and parking courtyard